

great lakes REPORTER

A Publication of American Public Works Association - Michigan Chapter • Vol 127 • No. 3 • Winter 2025

—
**SNOW PLOW ROADEO
LARGEST TO DATE!**

—
**AI, LEADERSHIP AND PUBLIC
WORKS**

—
SAVE THE DATE - GLX 2026



REBUILDING MICHIGAN'S INFRASTRUCTURE

One Neighborhood at a Time



Learn More About SAK

PIPELINE INFRASTRUCTURE. SOLVED.™

Deteriorating infrastructure. Diminishing resources. We've seen it all. And solved it time and again for communities and companies from coast to coast.

As one of the nation's most respected pipeline rehabilitation contractors, SAK Construction brings proven experience and innovation to every project.

Contact SAK today for more information about our pipeline solutions!



CURED-IN-PLACE PIPE



GEOPOLYMER



SPIRAL WOUND PVC



SLIPLINING

sakcompanies.com



651.263.0498

**American Public Works Association
Michigan Chapter**

APWA Michigan Chapter is comprised of public and private sector professionals serving Michigan citizens. The Association promotes professional excellence and public awareness through education and advocacy.

Call 517.371.2223 for Great Lakes Reporter ad rates.

MICHIGAN CHAPTER OFFICERS

PRESIDENT Jennifer Lawson

jlawson@a2gov.org

PRESIDENT-ELECT Mark Norton

markn@spicergroup.com

VICE PRESIDENT Bart Franklin

BFranklin@hrcengr.com

SECRETARY/TREASURER Linnea Rader

linnearader@vbcrc.org

IMMEDIATE PAST-PRESIDENT

Brandy Siedlaczek

bsiedlaczek@cityofsouthfield.com

APWA NATIONAL COUNCIL OF CHAPTERS,

MICHIGAN REPRESENTATIVE John Thompson

jthompson@sakcon.com

REGION V DIRECTOR Larry Hummel

lhummel@fveng.com

APWA CHAPTER COORDINATOR

Rhonda Wilhite

BRANCH PRESIDENTS

DETROIT METRO Hannah Driesenga

Hannah.driesenga@ohm-advisors.com

DOWNRIVER John Selmi

john.selmi@cantonmi.gov

MIDEAST Mark Norton

markn@spicergroup.com

MIDWEST Derek Gajdos

dgajdos@grandhaven.org

NORTHERN Andy Keller

Andrew.keller@spicergroup.com

SOUTHWEST Kevin Spyhalski

kevin.spyhalski@ejco.com

CHAPTER/WEBSITE ADMINISTRATOR

Tracy Spencer

tracy.spencer@macqueengroup.com

EDITOR

GCSI Association Services, 517.371.2223

No part of this publication may be reproduced without permission of the publisher. Article submissions are considered for publication and accepted at the approval of the Editors. We reserve the right to edit submissions for accuracy, clarity and length.

Opinions expressed by contributing authors are not necessarily those of APWA-Michigan, its officers, employees, or the editors. Advertisers and Sponsors are solely responsible for the accuracy of information in their ads and listings.



great lakes REPORTER

In this Issue...

- 4 **PRESIDENT'S MESSAGE**
- 6 **BECOME A CHAPTER PARTNER**
- 8 **A YP EXPERIENCE AT PWX**
- 12 **GLX 2026 SAVE THE DATE**
- 13 **ANN ARBOR PUBLIC WORKS OPEN HOUSE
DRAWS OVER 700 PEOPLE**
- 15 **FACE YOUR FEARS: LEADING THROUGH AI
UNCERTAINTY IN PUBLIC WORKS**
- 18 **SNOW PLOW ROADEO LARGEST TO DATE**
- 21 **NEW LIVONIA DPW FACILITY OFFERS
EMPLOYEES, COMMUNITY SAFER AND MORE
EFFICIENT SERVICES**
- 25 **INVESTING IN THE FRONT LINE: WHY THE
MICHIGAN ROAD SCHOLARS PROGRAM
MATTERS**
- 27 **CITY OF GRAND RAPIDS IMPLEMENTS NEW
MANHOLE SOLUTION; INSPIRES REGIONAL
COLLABORATION**
- 30 **CHAPTER PARTNERS**
- 32 **CALENDAR OF EVENTS**
- 34 **THANK YOU ADVERTISERS**

Cover photo: APWA Michigan Chapter



PRESIDENT'S MESSAGE

Jennifer Lawson, CSM, City of Ann Arbor

WHY I CHOSE A CAREER IN PUBLIC SERVICE

From a young age, I found myself tagging along with my dad on job sites across Southeast Michigan. He was a civil engineer, and I can still remember holding the survey rod for him, coloring the back of mylars, walking construction sites to review road layout, the smell of fresh asphalt, the hum of machinery, and the quiet pride that came from seeing something tangible take shape — a new road, a subdivision, a park. What I didn't realize then was that I was learning the essence of public service: the power of building communities and the responsibility of caring for the places people call home.

Those early experiences shaped the path I've followed ever since, even if I didn't know that was my direction. I chose a career in public service because I believe deeply in compassion for the community — in creating spaces and protecting natural resources that help people and the community thrive. Our work isn't always glamorous, but it's profoundly meaningful. Every stormwater drain, water main, sidewalk, and greenway represents a commitment to safety, sustainability, and connection.

Public service is also about stewardship. We have the privilege and duty to protect, restore, and enhance the natural environment so that future generations can enjoy the same Michigan lakes, rivers, and green spaces that we cherish today. This is more than preserving beauty — it's about ensuring resilience and balance. From restoring wetlands that naturally filter stormwater and provide habitat, to managing runoff that protects our rivers and Great Lakes, to planting trees that cool our neighborhoods and clean our air — every decision we make helps sustain the delicate systems that make Michigan unique.

Creating sustainable communities means thinking beyond today's needs — investing wisely in resilient infrastructure, supporting innovative technologies, and planning for a future where people and nature coexist in harmony. Whether we're strengthening our stormwater systems to handle more intense weather, designing complete streets that serve all users, or ensuring our utilities remain reliable and efficient, each investment we make tells a story of foresight and care.

And through it all, we are never alone. We're part of something bigger — a *Public Works Family* that shares common values of service, collaboration, and pride in what we do. Together, we celebrate the triumphs, tackle the challenges, and lift one another up in the shared mission of making our communities stronger.

As we move forward together into the New Year as an APWA community, I encourage each of you to take a moment to reflect on your own "why." What brought you into this field? What keeps you here? Whether it's the satisfaction of solving tough challenges, mentoring the next generation, or simply knowing your work makes a difference, your "why" deserves to be celebrated.

Thank you for choosing a career that serves others, and for being part of the team — our *Public Works Family* — that keeps Michigan moving forward.



Jen fishing with her dad



VACTOR[®]
Subsidiary of Federal Signal Corporation



Proud to be Michigan's Exclusive Dealer for Vactor

**Comprehensive sales,
service, parts and support**



Schedule a demo today!

©MacQueen Equipment, LLC. All Rights Reserved.

macqueengroup.com

BECOME A PARTNER WITH APWA MICHIGAN

APWA exists to support our public works professionals. Our objectives include the development and education of the people and organizations that plan, build, and maintain the core infrastructure of our communities. As a partner with APWA, you will network with the professional people and agencies that our citizens/residents count on to maintain and improve the public works components of our communities. Partners become part of the larger organization that the public counts on.

We invite you to become a 2026 partner (sponsor) of the APWA Michigan Chapter to help the organization to further achieve our mutual goals. As a partner with the State Chapter, you are also a partner in each of our five Michigan local branches. There are numerous branch activities throughout the year that you can also participate in, ranging from benefit golf outings, conferences, equipment shows, lunch n learns, municipal snow rodeos, and various networking events, including the up-and-coming APWA Young Professionals.

The Michigan Chapter has a long history, as it was established back in 1936. The Chapter is built on the success of the past and engages in the same educational, networking, and public service activities as the national parent APWA organization. Nevertheless, we do so close to home where members can easily take advantage of our programs. The flagship of our networking and educational events is the annual Great Lakes Expo (GLX), held the third week of May in Northern Michigan. With attendance exceeding record levels, members find great value participating in GLX as they can earn CEUs by attending numerous formal education sessions, networking during a golf scramble or wine tour, and browsing the expo floor where partners can share their latest offerings and learn what their customers really need. Attendance includes public works directors, superintendents, project managers, engineers, consultants, and other professionals. Hands-on equipment, trucks, and site tours are also typical.

APWA Michigan also has a published periodical known as the “Great Lakes Reporter” that is released three times a year. The publication includes stories on public works current events, educational segments, what’s new, and advertising opportunities for our partners to increase exposure to public works.



Bonkowski

The cost to be an APWA Michigan Partner is only \$450/year (plus your cost of being a National APWA member). Your partnership promotes and enables the educational mission and goals of the Michigan Chapter. It enables you to enhance relationships with existing clients, facilitate new relationships with potential clients, and strengthen your exposure to the state-wide public works sector. Additional opportunities exist once a partner. You can select a la carte advertising or choose one of our packaged partner levels that provide savings for being actively involved with the Chapter. Upon reviewing the different levels of partnership, consider the one that best fits your offering and marketing budget for the calendar year.

We appreciate your consideration in being an APWA Michigan Partner.

Mark Bonkowski
APWA Michigan, Partner Relations Chair
President, Precision Concrete Cutting

If you have questions, please contact Mark at (616) 403-0205 or MBonkowski@PCCMich.com.

PARTNERSHIP OPPORTUNITIES

Bronze - \$450

- ▶ Company name and link on website \$250
- ▶ Company name in Great Lakes Expo (GLX) Program Guide \$200
- ▶ Company listed in one edition of Great Lakes Reporter (GLR) \$200

Package value: \$650

Silver - \$2,200 includes Bronze Level Package features (\$650) plus the following:

- ▶ Two registrations for MI APWA Great Lakes Expo (GLX) \$900
- ▶ Half page color ad in Great Lakes Reporter \$1,350
- ▶ GLX Exhibit booth (or ad in program) \$450

Package Value: \$3,350



A vendor truck on display at GLX



Vendors mingling with GLX attendees

Gold - \$3,300 includes Silver Level Package (\$3,350) features plus:

- ▶ Increased ad size to Full Page Color Ad in Great Lakes Reporter \$300
- ▶ Receive both GLX Exhibit Booth & GLX Program Ad \$450
- ▶ Lunch Sponsor at GLX \$500 (includes signage)
- ▶ Sponsorship at PWX Michigan Night \$300 (includes signage)

Package Value \$4,900

Platinum - \$5,400 includes Gold Level Package (\$4,900) features plus the following:

- ▶ GLX Dinner Sponsor \$1,000 (includes signage)
- ▶ GLX Special Event Sponsor \$1,000 (includes signage)
- ▶ SPOT & Fleet Maintenance Expo Sponsor \$300 (includes signage)

Package Value \$7,200



The vendor floor included a putting green

A YP EXPERIENCE AT PWX



By Katelyn Driscoll, PE, OHM Advisors

American Public Works Association Public Works Expo 2025 was held at the McCormick Center in Chicago. As you walk across the skybridge to the Lakeside Center, you are greeted by a giant PWX Chicago banner and the friendly chatter of APWA members getting ready for a fun-filled week.

YP SUMMIT

For the Young Professionals, the Saturday Summit was jampacked with exciting events, from start to finish. The day started with breakfast and ice breaker activities. It was followed by a warm welcome from the APWA National President, Vic Bienes, and Chief Executive Officer, Scott Grayson. Next YP attendees engaged in an interactive session about Empowering Young Leaders: Building Trust, Vision, Communication, and Resilience in Leadership with the Keynote Speaker Eric Herdman. During the session, YPs shared workplace experiences and learned useful tips on how to build trusting relationships, foster resiliency in their team and effectively communicate.

After lunch there was a Fireside Chat with Allison Swisher, the Director of Public Utilities for the City of Joliet, Illinois, who has worked in Civil Engineering for 20 years, held an interactive conversation about her experiences working in both the private and public sector. Following this discussion, a panel of public and private sector leaders shared skills of active learning and how you can use self-awareness, empathy and authentic connections to elevate your leadership. At the end of the afternoon, a closing reception was filled with reflective conversations about the new skills and knowledge that were learned throughout the day.

SESSIONS

The sessions offered from Sunday to Wednesday provided something for everyone! From Streamlining CIP Project Delivery to Technical Learning Tours via bicycle, DPW professionals could find the solution to many problems. Sessions were held both in designated rooms and right on the exhibitor floor. One of my favorite sessions was led by Michigan's very own Gary Mekijan and Karen Mondora with the City of Farmington Hills. Urban Deer Management: Challenges, Case Studies, Partnerships, and Solutions was an informative presentation about the city's experiences with the population explosion of white-tailed deer and how the increased amount of deer impact homeowners, motorists, and park and public works agencies. The presentation broke down the step-by-step process of how to develop a management plan and which stakeholders to engage throughout the process.

EXHIBITOR HALL

The exhibitor hall was packed with a wide range of DPW equipment and technology to support daily DPW duties. Vendors were available at their booths throughout the day to demo their products and answer any questions. A daily happy hour was hosted by the vendors, offering beers and spirits to enjoy while perusing the tables and set ups. In addition to exciting new solutions and friendly conversations, the exhibitors also had great swag. My personal favorite is a stress ball from Brigade, Inc. as shown in the picture at right.



SOCIAL EVENTS AND SIGHTSEEING

Attendees were provided with many opportunities to network and sightsee while attending the conference. On Sunday night, the Chicago Metro Chapter hosted a “Get Acquainted Party” at the Navy Pier’s Ano Ballroom. Here the conference attendees were gathered to kickstart the conference by enjoying the breathtaking views, aerial performers, classic rock music and, of course, the food. Other events were hosted by the Chicago chapter, including a Brewery Tour on Saturday and a trip to Wrigley Field on Monday.

A boat cruise on Lake Michigan was hosted on Tuesday, by the Michigan APWA chapter. The cruise included dinner, breathtaking views of the Chicago landmarks and jovial conversation as the Michiganders gathered to celebrate an educational and enjoyable conference.

Overall, the PWX conference was an excellent opportunity to network and learn from Public Works professionals from all over North America. Also, I was reminded that communities far from Michigan experience the same types of challenges and that solutions to these challenges may be available amongst our peers. Whether I was attending an educational session or singing with friends at Howl at the Moon, the PWX did not disappoint.



Katelyn Driscoll (back) and other YPs with MI-APWA board members at PWX



Katelyn Driscoll (left) and other YPs at the YP Summit at PWX



YPs at PWX



Katelyn Driscoll (front right) and other YPs with MI-APWA board members at a Chicago Cubs game

Engineering. Environment. Excellence.



Charles Hart 248.454.6301 | chart@hrcengr.com



SALES | RENTALS | SERVICE | PARTS

DRIVING SUCCESS, POWERING SOLUTIONS



YOUR INFRASTRUCTURE PARTNER FOR OVER 50 YEARS

800.336.4369

EST. 1973

TEAMJDC.COM

Save the Date



APWA PRESENTS

2026 GREAT LAKES EXPO

MAY 19-21, 2026

BOYNE MOUNTAIN RESORT

REGISTRATION OPENS JANUARY 2026



VISIT OUR WEBSITE
michigan.apwa.org

LARGEST PUBLIC WORKS CONFERENCE IN THE STATE

- Provides a unique blend of education, technology, and networking tailored specifically for the challenges and opportunities of public works across the state.
- Facetime with vendors and opportunities for exploring products and services

EDUCATION TRACKS

Infrastructure Management Technology and Innovation Sustainability and Resilience
Management and Operations Fleet Maintenance

ALSO TAKE ADVANTAGE OF...

Peer-to-Peer Learning: Meet and engage with hundreds of public works directors, superintendents, project managers, engineers, and consultants from across the region. Share ideas, discuss common challenges, and gain valuable insights from the diverse experiences of your peers.

Relationship Building: GLX is known for its social events, such as receptions and optional outings (like golf or wine tours in past years) that foster a keen sense of camaraderie.

Young Professionals: YP events often help emerging leaders connect, providing mentorship and career-advancing opportunities.

ANN ARBOR PUBLIC WORKS OPEN HOUSE DRAWS OVER 700 PEOPLE

In October, the City of Ann Arbor Public Works hosted its annual open house.

The event featured touch a truck, paint a snowplow, fix a water main break, operate an automated solid waste truck, sewer root cutting and pipe televising demonstrations and forestry climbing.

Also included in the open house were educational booths that taught attendees how flood plains work, what not to flush down a toilet, how storm water separators pretreat storm water, how to properly recycle, the benefits of trees, creating crafts from discarded items and more.

The event continues to gain in popularity and attracted over 700 people this year.

“Ann Arbor Public Works employees take a lot of pride in this event and enjoy interacting with the crowd to tell them all about the services we provide,” said Paul Matthews, Public Works Manager.



Sanitary sewer equipment and pipe cleaning demonstration and combination sewer cleaning trucks (yellow) and an easement sewer cleaning machine (red)



Melissa Menerey, Stormwater and Floodplain Programs Coordinator, demonstrates how floodplains and stormwater management work together to protect both the natural and built environment.



Ann Arbor Public Works Tech Corey Holt posing with the fan favorite poop emoji mascot worn by Public Works Tech Pat Stacy



Ann Arbor Public Works Tech Zach Mosher (right) running the paint a plow activity.

MICHIGAN CHLORIDE SALES: THE PERFECT SOLUTION FOR ANTI-ICING & DE-ICING

TRUSTED

Michigan's premier
anti-icing liquid

EFFICIENT

Reduces bounce and scatter
and activates rock salt

SUPERIOR

Effective at temperatures
lower than rock salt

COST CUTTING

Reduces salt usage
by up to 40%

***Naturally Occurring MCS
Calcium Chloride Mineral Well Brine***



Michigan Chloride Sales
"The De-Ice Masters"

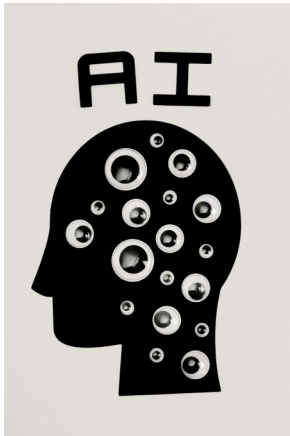
St. Louis, MI
www.michiganchloride.com
(989) 681-3221
sales@michiganchloride.com

**Quality Product.
Superior Service.
Best Value.
Every Time.**

FACE YOUR FEARS: LEADING THROUGH AI UNCERTAINTY IN PUBLIC WORKS

By Linnea Rader, Treasurer, MI-APWA

Finance and Human Resources Director, Van Buren County Road Commission



Over the past year, I've been attending our county's AI Task Force meetings. If I'm being honest, I wasn't exactly scared when I started, but I was concerned. Artificial intelligence felt like one of those seismic shifts that could change everything, and when you're responsible for an organization and the people in it, that

uncertainty sits heavy.

I kept hearing the worried comments (and thought some myself): “Will this replace our jobs?” “How do we know it's accurate?” “What about our data?”

These weren't irrational fears. They were legitimate questions from dedicated public works employees trying to understand their future.

But here's what happened: The more I learned, the more I realized AI isn't the threat I'd imagined. Instead, it became a tool that makes parts of my job genuinely easier, helping me work smarter rather than harder. The technology that seemed intimidating from a distance became useful once I looked it straight in the eye.

NAMING WHAT WE FEAR

Let's be honest about what's worrying people in public works right now. Job elimination tops the list: If AI can write reports and optimize routes, what happens to the people doing those jobs? This fear hits especially hard when we're already struggling with workforce shortages and an aging demographic. Will we all be replaced?

Accuracy and liability run close behind. When AI recommends a maintenance schedule or drafts a response to a citizen complaint, who's responsible if it's wrong? Public Works operates in a world of accountability, from taxpayers, to regulatory agencies, to the residents we serve. One bad AI recommendation could mean a lawsuit, a regulatory violation, or in the worst case, someone getting hurt. The stakes feel incredibly high.



Rader

Data privacy keeps IT directors up at night. We handle sensitive information, personnel records, citizen complaints, infrastructure conditions, emergency response protocols. What happens when we feed that into AI systems? Where does it go? Who can access it? Are we creating new security risks while trying to improve efficiency?

Cost and implementation create practical barriers when we're already running decades-old systems held together with workarounds and institutional knowledge. The idea of layering AI on top of infrastructure that barely talks to itself feels overwhelming. Where do you even start? What's the impact on the budget? Do we need entirely new systems first?

These concerns are real and deserve acknowledgment. Leaders who dismiss them as resistance to change or fear miss the point entirely. Our teams aren't afraid of technology; they're afraid of being left behind, of making mistakes with high consequences, of losing what makes their work meaningful.

But here's the leadership truth that goes beyond AI: The best way to lead through any uncertainty is to face your concerns head-on and learn about them.

WHAT I LEARNED BY LEANING IN

Through the task force, I started using AI for low-stakes, time-consuming tasks. Drafting initial responses to routine emails. Summarizing lengthy documents. Creating first drafts of reports I'd heavily edit anyway. Doing the research for ideas I'd been thinking about.

What I found was revelatory: AI didn't replace my judgment; it gave me back time to apply that judgment more thoughtfully. Instead of spending an hour drafting a routine memo from scratch, I could spend 15 minutes refining an AI-generated draft, leaving 45 minutes for work that requires human insight, strategic planning, relationship building, mentoring my team and thinking through complex problems that don't have template solutions.

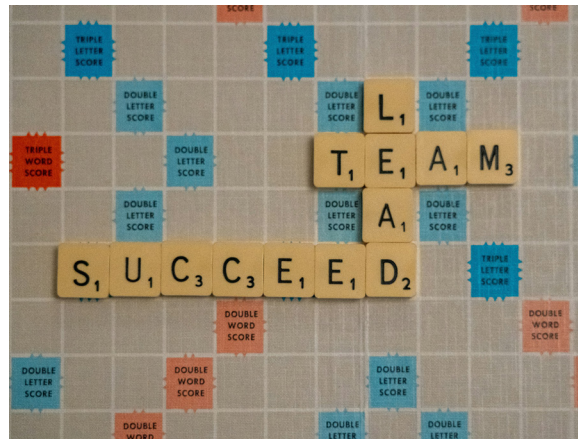
And honestly? I've trained my AI with my voice and writing style, so now editing takes even LESS time. The tool learned how I communicate, what matters to me, how I structure my thinking. It's not replacing me; it's amplifying my capacity to do the work only I can do.

The job displacement fear shifted dramatically. I started seeing AI as a tool that could help us do more with the workforce we have, and maybe even make Public Works careers more attractive to the next generation. If we can eliminate the tedious administrative work that bogs people down, we free them up for the meaningful, skilled work that drew them to public service in the first place. That's not job elimination; that's job enhancement.

The accuracy concerns? Valid, but manageable when you understand AI as a first draft generator, not a decision maker. You don't implement AI and walk away. You implement AI and supervise it the way you'd supervise any team member: check work, provide feedback and maintain accountability. The human remains in charge, exactly where we need to be in public sector work where judgment, context, and community values matter enormously.

THE PATTERN BEYOND TECHNOLOGY

This pattern isn't unique to AI. I've watched it play out throughout my career: The limited revenues that forced us to innovate and ultimately discover more efficient, effective ways to deliver services; the policy change that drove us crazy and frustrated us at first but improved our processes and accountability in ways we didn't anticipate; and the difficult conversation



with a struggling employee that strengthened the relationship and their performance because we stopped avoiding the issue.

The thing we dreaded became the thing that moved us forward, but only because we engaged with it instead of avoiding it.

Think about the challenges beyond AI that are keeping you up at night: new stormwater regulations that seem impossible to meet with your current resources; shifting community expectations at every turn; generational differences in your workforce, creating communication gaps; and recruitment and retention struggles that leave critical positions unfilled for months.

Whatever it is, the instinct might be to keep your distance, to wait and see, to hope someone else figures it out first or that the problem somehow resolves itself. But that's not leadership, and deep down, you know it doesn't work.

FROM AWARENESS TO ACTION

Here's your challenge: Identify one thing that has you concerned right now – not a crisis requiring immediate emergency response, but that nagging worry you've been filing under "deal with later." Now, ask yourself: What's one step I can take this week to learn about this instead of worry about it?

For AI specifically, start small. Pick one routine task that doesn't require unique human judgment. Maybe it's summarizing meeting notes, writing a memo, drafting standard operating procedures, or researching best practices from other agencies. Then ask: Could new tools help here? What would responsible experimentation look like? What's the worst that could happen if I TRY this in a low-risk environment?

As I wrote earlier, when it comes to AI, start small. Maybe it's dedicating an hour to actually trying an AI tool instead of reading articles about AI. Maybe it's talking to a colleague at another agency who's already experimenting. Maybe it's bringing the conversation to your leadership team and asking, "How should we be thinking about this strategically?"

The specific action matters less than making the mental shift from avoidance to engagement.

WHERE REAL LEADERSHIP LIVES

Stop letting fear of change disguise itself as a legitimate concern. Face it. Learn from it. Grow through it.

That's where real leadership lives – not in having all the answers, but in being willing to ask better questions. Not in pretending uncertainty doesn't exist, but in modeling how to navigate it with curiosity and purpose.

Your team is watching how you respond to change. When you model curiosity over avoidance, learning over defensiveness, and engagement over running away, you give them

permission to do the same. You create an organizational culture where change becomes opportunity rather than threats, where challenges become chances to innovate rather than reasons to hunker down.

The Public Works leaders who will thrive in the coming years won't be the ones with the most sophisticated technology or the biggest budgets. They'll be the ones who created cultures of continuous learning, thoughtful experimentation, and strategic adaptation. The ones who faced uncertainty, whether about AI, regulations, workforce challenges, or community expectations, with clear eyes and open minds.

So, this week, pick your fear. Then, go learn something about it.

That's how we lead.

If you want to consult on training or coaching for your team, please reach out. Linnea@leadwithlinnea.com | 269-621-5282. Be sure to check out my website and sign up for exclusive content www.leadwithlinnea.com.



ENGINEERS
SURVEYORS
PLANNERS

spicergroup.com



Scan for more
information



SAGINAW • DUNDEE • MANISTEE • GRAND RAPIDS • EAST LANSING
ST. JOHNS • TRAVERSE CITY • BINGHAM FARMS • STANDISH



SNOW PLOW ROADEO LARGEST TO DATE

By Kristen McCue

The Midwest Branch hosted its annual Snow Plow Roadeo in October. It was the most highly attended event to date with 670 participants.

Not only was it an exciting day of competition, skill and camaraderie, local celebrities took their turn behind the wheel, including Rep. Bradley Slagh.

“The biggest challenge is driving trucks we don’t own,” said David Stafinski, Van Buren County Road Maintenance Employee. “Also, it’s a bit intimidating going into that environment and competing against 80 other drivers from the state.”

2024 ROADEO

James Norton, from the City of Kentwood, won last year’s Snow Plow Roadeo, along with his team. As such, Norton won the opportunity to compete in the national Snow Plow Roadeo in Colorado.

There, his team placed 23rd.

Norton, who was a judge in this year’s Roadeo, won the competition last year and said, the trucks were a lot smaller and didn’t run underbodies at the national Roadeo.

“The Roadeo is a good chance to get behind the wheel before it starts snowing, and a lot of the obstacles pertain to actual driving, such as parked cars,” Norton said. “So it’s helpful that the course shows you how to drive around a car that’s parked in the road. It gives us a chance to practice.”

Although a veteran with nine years of plowing experience, Norton said more time behind the wheel is valuable for these first responders.

2025 SNOWPLOW ROADEO WINNERS

TOP TEAM

Joe Morey & Todd Cupp: City of East Grand Rapids

TOP DRIVER

Jody Flipse: Kent County Road Commission

TOP CELEBRITY GUEST DRIVER

Sarah Phillips: Communications, Road Commission of Kalamazoo County

“The Rodeo is a good chance to get behind the wheel before it starts snowing, and a lot of the obstacles pertain to actual driving, such as parked cars. So it’s helpful that the course shows you how to drive around a car that’s parked in the road. It gives us a chance to practice.”

James Norton, City of Kentwood



The Rodeo course



The vendor floor



A truck navigates the Rodeo course

REMEMBERING THE FOREFATHER OF THE ROADEO



Snyder

The Public Works industry is grieving the death of Jerry Snyder, retired Public Works Director for the City of Wyoming, who was an active member of APWA. He passed away in October.

Jerry was the founder of the Midwest Snow Plow Rodeo, and served as the Southern Michigan Branch President. Under his leadership that branch split into what are now the Midwest and Southwest branches.

He was also the chair of the Transportation Committee and was the chair of the Volunteer Committee for the North American Snow Conference. Also during his career, Jerry was honored with APWA's Hal Hultquist Award.

One of Jerry's career accomplishments includes the restoration of the City of Wyoming's infrastructure. In addition, he was instrumental in the development of the city's water distribution and collection policies. Jerry developed the City of Wyoming's snow removal system into one of the best in the Grand Rapids area, and he also led a \$6 million per year Capital Improvement Project.

Jerry earned a bachelor's degree in civil engineering from Michigan State University.

APWA extends our condolences to the Snyder family.



Fallen Tribute to Jerry

**Weren't you guys here yesterday?
And this was in there, and that was over there?**

UPM® Cold mix is so superior, we guarantee it works in **wet weather**.

UPM® mix is a high performance **WET WEATHER** permanent repair material. Wet weather doesn't affect the integrity of UPM mix so there is no raveling or stripping. You won't have to go back to re-fill the holes. We guarantee it!



The makers of UPM® mix

FLANAGAN SALES
Phone: 231.266.8090
Cell: 231.883.3030
flangansales@aol.com

uniquepavingmaterials.com



THE GOOD STUFF
Repair Material

Once and Done.

THE COMMUNITY ADVANCEMENT FIRM

ARCHITECTS. ENGINEERS. PLANNERS.

At OHM Advisors, multidisciplinary teamwork focused on people-first solutions yields ideas that aren't just different.

They're better.

Share your vision with us, and together we'll create great places for people.



SCAN FOR
INNOVATIVE
SOLUTIONS

OHM-Advisors.com | 888.522.6711



NEW LIVONIA DPW FACILITY OFFERS EMPLOYEES, COMMUNITY SAFER AND MORE EFFICIENT SERVICES

By Kristen McCue

It's only been four years, but Don Rohraff, Director of the City of Livonia's Public Works, and his staff, have already felt the advantages of working in the city's new Department of Public Works facility.

DPW built the new facility for various reasons. First, there was never a true water and sewer building established for the employees.

The old building was a makeshift add-on that never served the purpose of getting equipment out of the weather, housing employees' needs, like having enough restrooms, locker storage and a breakroom, Rohraff said.



Construction of the new DPW building

And the old building wasn't tall enough to get dump trucks, vector trucks or any equipment that was on a trailer inside. In addition, there were safety and security concerns, and a desire to boost morale.

But the new facility has assuaged those concerns. It houses administration staff, the Engineering Department and all water, sewer and meter employees.

Opening its doors in August 2021, the building project continued through Covid. The project came in on budget at \$10.5 million and on time.

Rohraff added the team navigated bumps along the way, including materials and equipment delays, labor issues and cost increases.

Rohraff said he's proud of providing employees with a building that serves their needs. He said the building is dedicated to them, and in the lobby there are plaques with names of every employee who was working there at the time.

The community benefits as well.

Storing equipment inside allows faster response time since trucks don't need to warm up. Additionally, the community has a one-stop

“This project has allowed employees to be able to use technology to be more responsive and to be able to serve our community more effectively and more efficiently.”

Don Rohraff, Director of Public Works for the City of Livonia

location for all their needs, whether that is engineering, permits or general DPW questions. The building has also become the premier meeting location with a large 50–60-person meeting room as well as four other meeting spaces.

“Having the technology and meeting space to let employees discuss and bounce ideas off each other and be able to pull up maps from the server onto large monitors, do computer training courses, to have SCADA and other programs being used in the offices have made for a more efficient and better work environment for everyone,” Rohraff said.

“This project has allowed employees to be able to use technology to be more responsive and to be able to serve our community more effectively and more efficiently,” he said. “Knowing how the cost of everything continues to climb, having the ability to get our equipment indoors should allow us to extend the life cycle of the vehicles and equipment, thereby saving money.”



Inside storage



Inside storage



The new City of Livonia DPW building



The conference room at the new DPW building

Benchmark of Excellence
since 1954



Municipal Engineering | Urban Design and Sustainability | Survey and Mapping
3D Reality Capture | Pavement Management | Landscape Architecture
Planning | Transportation Engineering | Construction Engineering



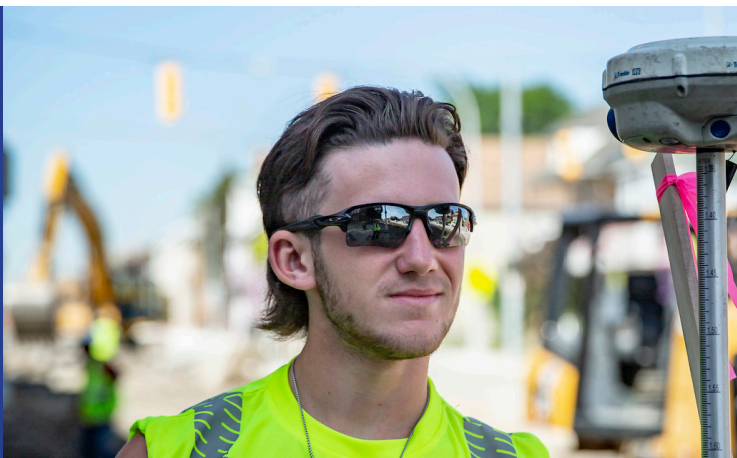
www.sda-eng.com | 800.598.1600



13500 Reeck Road
Southgate, MI 48195
(734) 759-1600

400 North Main Street, Suite 303
Milford, MI 48381
(248) 684-1033

www.hengineers.com



Community foundations built with optimism

Civil Engineering

Land Surveying

Construction Engineering

Transportation Engineering

Program Management



ETNA SUPPLY COMPANY

SMART METERING SOLUTIONS FROM SENSUS



iPERL+ Water Meters

ally Water Meters



Sensus M420
FlexNet Base Station

Cordonef Ultrasonic
C&I Water Meter



Stratus IQ+ Electricity Meter

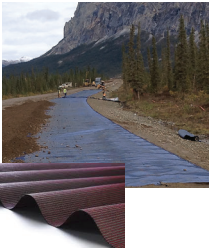


Aclara kV2c Gen 5
Electricity Meter

Advanced technology identifying more specifically than ever when, where, and why water and electricity is being used.



MIRAFI GEOSYNTHETICS AND MKB EROSION & SEDIMENT CONTROL SOLUTIONS



MIRAFI H2Ri & RSi-Series

Benefits:

- Offering a range of moisture management solutions for pavements and subgrade stabilization applications
- Provides stabilization in all seasons and weather conditions
- Through aggregate interaction and moisture management superior performance of trafficked areas and infrastructure



SiltSoxx & RoadWattle

Benefits:

- Integrated straps for easy moving
- Dries quickly
- Field longevity of one year
- Can be staked through or driven over



19 Branches throughout Michigan

800-632-4576
etnasupply.com

Prein & Newhof

Engineers • Surveyors • Environmental • Laboratory



www.preinnewhof.com

INVESTING IN THE FRONT LINE: WHY THE MICHIGAN ROAD SCHOLARS PROGRAM MATTERS

By Linnea Rader

Finance and HR Director, Van Buren County Road Commission

The week of October 20-24 wasn't a typical week for 121 front-line Public Works employees across Michigan. Their employers made a choice, a powerful one, to invest in their growth by sending them to the APWA Michigan Road Scholar Program.

One attendee captured it perfectly: "Even though I am a 30-year veteran in the field, I learned so much. Thank you for the opportunity, and I look forward to the next two years to come."

WHAT MAKES THIS PROGRAM DIFFERENT?

The Michigan Road Scholar Program isn't your standard annual training seminar. Participants commit to one intensive week per year for three years in Mount Pleasant, diving deep into the skills that matter most for public works professionals. The curriculum is comprehensive and hands-on, covering essential topics like de-escalation techniques, chainsaw safety, customer service excellence, 10-hour OSHA certification, pesticide applicator licensing, mower operations, work zone safety, snow and ice control, and team leadership, just to name a few.

As another attendee put it: "Definitely worth coming to. Best training program I've been to, and I highly recommend it. I believe guys that have been in the industry for a long time will learn something new and take it back. Thanks for giving us the opportunity!"

WHERE LEARNING GETS REAL

One of this year's standout experiences was the rotating station day. Attendees started inside, learning the fundamentals: pre-trip inspections, temporary construction zone setup, basic chainsaw maintenance, ropes and knots for tree operations, and load securing techniques. But



Attendees participated in hands-on learning

here's where it gets good, in the afternoon, they didn't just talk about it. They *did* it.

In smaller groups, participants put their hands on equipment, practiced techniques, and worked through scenarios in a safe, controlled environment. The day wrapped up with a ratchet strap race that brought out everyone's competitive spirit and reinforced the importance of proper technique under pressure.

UNDERSTANDING OURSELVES TO SERVE BETTER

Perhaps the most transformative element wasn't about equipment or procedures at all. Through the Real Colors program, each participant explored their own working style, how they communicate, how they listen, and how they can recognize those same traits in their colleagues. This wasn't abstract personality assessment; it was practical insight that attendees could immediately apply to improve team dynamics back at their agencies.

“Even though I am a 30-year veteran in the field, I learned so much. Thank you for the opportunity, and I look forward to the next two years to come.”

The session “I am the Machine,” presented by two DPW employees, hit home for nearly everyone. The central message was simple but powerful: Our bodies are the most important machines we operate, yet they’re often the ones we maintain least. We meticulously service our trucks, saws, and heavy equipment, but do we take the same care with ourselves? For many attendees, the answer was an uncomfortable no. It sparked necessary conversations about self-care and sustainability in demanding Public Works careers.

THE INVESTMENT THAT PAYS FORWARD

If you're thinking this sounds intense, you're right. This program demands commitment, not just from participants, but from the organizations that send them.

Take a moment right now and consider: Who in your organization could benefit from the Road Scholar Program? Which employees could grow in ways you haven't imagined? Who might walk away saying, as one participant did, “The events this week were amazing and very informative. I wish I could have one more year to be a part of such a great group of people and learn more things I'll use sometime in my life in the future.”

When you invest in your people, they invest in you and your organization. Front-line Public Works employees are too often overlooked for high-quality training opportunities like this. The Michigan Road Scholar Program gives us the chance to break that pattern.

Don't let another year pass. Sign your people up today.



This year's Road Scholar class



Hands-on activity



Equipment demo

CITY OF GRAND RAPIDS IMPLEMENTS NEW MANHOLE SOLUTION; INSPIRES REGIONAL COLLABORATION

Every winter, Michigan's roads take a beating. Frost heave, caused by the freezing and thawing of moisture beneath the pavement, leads to broken, uneven, and bumpy roadways. For Public Works officials, this recurring issue is more than a nuisance; it's a costly challenge. But a solution is gaining traction: the SELFLEVEL® access assembly. Earlier this year, the APWA Midwest Chapter hosted a collaborative lunch & learn demo in West Michigan, bringing together city officials to explore the benefits of the SELFLEVEL solution firsthand.



DPW employees participate in manhole demo

Equipment manufacturer EJ, located in Northern Michigan, said, “Events like these highlight the value of APWA in fostering peer-to-peer learning and sharing best practices—helping communities stay ahead of infrastructure challenges.”

A member of MI-APWA, EJ has proudly partnered with the City of Grand Rapids and other local communities for decades, working collaboratively to develop forward-thinking solutions to persistent pavement degradation issues—particularly those affecting areas adjacent to manhole structures.

Matthew Anderson, Water and Sewer Superintendent for the City of Norton Shores, who attended the lunch and learn, said the event offered a valuable look into the installation process and highlighted the importance of proper installation in ensuring the product's long-term success. Also at the event, attendees had the opportunity for hands-on interaction and in-depth discussions with EJ representatives on site.

“In areas of our city with a high water table and Michigan's harsh winters, we see a lot of movement in the roads,” Anderson said. “The road starts to pull apart at the manhole structures first, then progresses down the road. The install does take time to master, but the EJ family does a great job assisting when needed. If these structures are installed properly, the road will last a lot longer.”

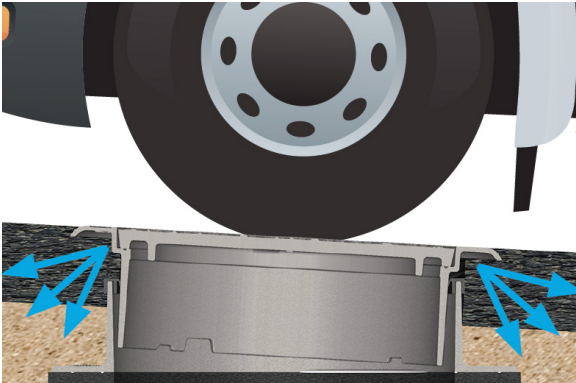
MANHOLE CONTINUED

A SMARTER WAY TO MANAGE MANHOLES

The SELFLEVEL is engineered to keep manhole covers flush with the pavement, even as the ground shifts. This innovative access assembly tackles cracked roads, routine maintenance, and difficult installations. Unlike traditional manhole units, the SELFLEVEL allows for a range of movement that keeps the frame and cover perfectly aligned with the finished surface.

WHAT MAKES IT DIFFERENT?

The secret lies in its “floating” effect. The upper frame moves with the surrounding road surface and disperses traffic vibrations outward.



Rendering of the SELFLEVEL access assembly dispersing traffic vibrations

Meanwhile, the gasket found in-between components helps to protect against excess debris from entering the manhole.

Together, the upper and lower frame design allows for an angular movement of 5 degrees articulation and upward or downward pavement heave and retraction—preventing the pavement deterioration typically seen around manholes.

PROVEN PERFORMANCE ACROSS THE WORLD

Originally developed in France, the SELFLEVEL concept entered the Canadian market in 2000 and expanded to the United States in 2008 with a fully “Made in the USA” design. This version was engineered to fit American-sized manhole covers, remain interchangeable with existing city-specified covers, and meet domestic engineering standards. Today, it complies with key federal requirements, including the Infrastructure Investment and Jobs Act (IIJA), Build America, Buy America Act (BABAA), Buy America, and EPA American Iron and Steel (AIS) regulations.

Since its introduction, the SELFLEVEL has gained significant traction—particularly in regions that experience harsh winter conditions. Communities across Michigan, including Norton Shores, Grand Rapids, Grand Haven, Coldwater,

Shaping the Future of the Great Lakes Communities



Experts on subjects that **matter**

ECT EXPERIENCE

- Ecosystem habitat restoration
- Wetland/avian/bat/fish assessments & studies
- Development of natural resource restoration policy/planning
- Hydraulics, hydrology & water quality modeling
- Renewable energy siting & permitting
- Water resources
- Grant assistance

- Public education
- NPDES stormwater compliance
- Contaminated site restoration
- Green stormwater infrastructure & low impact design
- Oil & gas services
- Environmental compliance & sustainability
- Cultural resources management



CONTACTS

Ecosystem Restoration
Director
John O'Meara, PE
734.740.7000
jomeara@ectinc.com

Natural Resource
Director
Tom Stanko
678.229.7789
tstanko@ectinc.com

Ecosystem
Ecologist
Marty Boote
734.478.2589
mboote@ectinc.com

Stormwater Compliance
Scientist
Noel Mullett
248.207.4890
nmullett@ectinc.com

Compliance & Sustainability
Operations Manager
Eric Schwiderson
989.387.9594
eschwiderson@ectinc.com

Great Lakes Offices: Ann Arbor, Detroit, Bay City, Lansing, & Traverse City, MI | Lombard, IL | Columbus & Northfield, OH

and Traverse City, have recognized its long-term benefits and incorporated it into their road construction specifications.

EFFICIENCY THAT PAYS OFF

Practice is key. The two-frame assembly that composes the SELFLEVEL is new to most contractors and does require some patience at first but eventually becomes easier to install than a typical single frame.

Unlike traditional assemblies, once the base frame is set, you're finished. There's no need to ensure the frame lines up with the existing curb line and shimming the frame to match the pitch of the road. The top frame will move to match the road surface leaving you with a smooth, durable, long-lasting result. Whether you're dealing with a new installation or retrofit, eliminating extra steps saves precious time on the job site leading to a more efficient and productive project.

While the upfront cost is higher than with regular access assemblies, there are substantial cost savings to be realized on the backend.



SELFLEVEL in Traverse City

Customers have reported saving nearly 50% on labor as well as eliminating the need to purchase extension rings and other maintenance tools for upkeep.

As Michigan continues to battle the effects of frost heave and aging infrastructure, innovative solutions like the SELFLEVEL are proving to be game-changers for municipalities across the state.



800.482.2864
www.wadetrim.com



ENGINEERING STRONGER COMMUNITIES

For nearly a century, we've been solving complex engineering challenges to maximize the value of your infrastructure investments. We adapt our work processes to fit the unique demands of each project using a collaborative, friendly style. The result? Solutions you can stand behind.

THANK YOU TO OUR CHAPTER PARTNERS

ADVANCED DRAINAGE SYSTEMS, INC.

Miguel Vargas
miguel.vargas@adspipe.com
419-215-8020
1644 Strasburg Road
Monroe, MI 48161-9720

ADVANCED REHABILITATION TECHNOLOGY

Alex Lantz
alex@artcoatingtech.com
419-799-1308
525 Winzeler Dr Unit 1
Bryan, OH 43506

ADVANCED UNDERGROUND INSPECTION, LLC

Jeana Garcia-Moir
jeana_au@yahoo.com
734-558-9646
39101 Webb Drive
Westland, MI 48185

ASPHALT MATERIALS, INC. BRUCE WEHR

brucew@asphalt-materials.com
614-634-6024
5400 West 86th Street
Indianapolis, IN 46268

ASPHALT ZIPPER, INC. MICHAEL BRANDT

ltingey@asphaltzipper.com
801-404-9028
310 West 700 South
Pleasant Grove, UT 84062

BOSTICK TRUCK CENTER NICK JEWELL

nick@bosticktruck.com
248-996-2898
1399 Joslyn Ave
Pontiac, MI 48340

C.S. TROJAN & ASSOCIATES, INC.

Craig S. Trojan
cs1trojan@gmail.com
810-227-7775
1375 Rickett Road
Brighton, MI 48116

CERTIFIED POWER SOLUTIONS

Don Nichols
dnichols@certifiedpower.com
313-655-9474
26495 Southpoint Rd
Perrysburg, OH 43551

CLEAR HEIGHTS CONSTRUCTION, LLC.

Jacob Dykstra
jake@chconstructionmi.com
616-371-2155
6686 Wilson Ave. SW
Grandville, MI 49418

CORE & MAIN

Angela LaForge
angela.caponi@coreandmain.com
586-785-8851
6575 23 Mile Rd.
Shelby Township, MI 48316

DUKE'S ROOT CONTROL, INC

Bob Hunn
bob@dukes.com
614-354-3927
3983 Eastbourne Dr
Syracuse, NY 13206

EGANIX INC.

Victoria Kleparek
victoria.kleparek@eganix.org
248-798-6178
1091 Centre Road, 120
Auburn Hills, MI 48326

EJ

James Cassel
James.Cassel@ejco.com
248-240-0515
10042 Majestic Blvd
Clarkston, MI 48348

ENVIRONMENTAL CONSULTING & TECHNOLOGY

John O'Meara
jomeara@ectinc.com
734-769-3004
2001 Commonwealth Blvd. Suite 300
Ann Arbor, MI 48105

ETNA SUPPLY COMPANY

Deanne Walters
dwalters@etnasupply.com
616-514-5146
1090 36th Street SE
Grand Rapids, MI 49508

EVOLUTION EDGES

Jim Hilgendorf
jimh@chemungsupply.com
607-438-0676
2420 Corning Road
Elmira, NY 14903

FASTER

Stephanie Hilgendorf
alex.villamar@fasterasset.com
770-851-3976
760 Lynnhaven Pkwy, Ste 203
Virginia Beach, VA 23452

FER-PAL CONSTRUCTION USA

Chris Van Wormer
chris.vanwormer@ferpalinfrastructure.com
734-624-5321
26187 North Line Road
Taylor, MI 48180

FERGUSON

Cassandra Hoppe
cassandra.hoppe@ferguson.com
262-350-9119
N63W15828 Claremore Circle
Menomonee Falls, WI 53051

FMX

Allison McGillivray
abigail.haberski@gofmx.com
614-915-2139
800 Yard St
Suite 115
Grandview Heights, OH 43212

FREDRICKSON SUPPLY, LLC

Alex Pummill
alex@fredricksonsupply.com
616-648-5064
3901 3 Mile Rd NW
Grand Rapids, MI 49534

GREAT LAKES CHLORIDE, INC.

Zach Clothier
zclothier@GLChloride.com
574-527-0287
P.O. Box 634
Grand Haven, MI 49456

HAVENER TECH

Mike Guerin
mguerin@havenertech.com
248-890-1812
433 Elmwood
Troy, MI 48083

HENNESSEY ENGINEERS

Debby Brauer
dlbrauer@hengineers.com
248-701-7943
13500 Reeck Road
Southgate, MI 48195

HESCO

Kip Koszewski
kip.koszewski@hesco-mi.com
586-565-0445
29770 Hudson Drive
Novi, MI 48377

HOEKSTRA EQUIPMENT

Mike Thorsen
mthorsen@hoekstrainc.com
616-450-6148
260 36th St SE
Grand Rapids, MI 49548

HORIZON SIGNAL TECHNOLOGIES

Andrew Harris
aharris@horizonsignal.com
260-229-5031
5 Corporate Blvd
Reading, PA 19608

HUBBELL, ROTH & CLARK, INC.

Charles E. Hart, P.E.
chart@hrcengr.com
248-454-6301
555 Hulet Dr. P.O. Box 824
Bloomfield Hills, MI 48303

HYDRO CORP

Jim Clevenger
jclevenger@hydrocorpmeters.com
231-590-9040
5700 Crooks Rd #100
Troy, MI 48098

INLAND WATERS POLLUTION CONTROL

Fred Schuessler
fred.schuessler@puriscorp.com
586-436-1621
4086 Michigan ave.
Detroit, MI 48210

JACK DOHENY COMPANIES, INC.

Adam Mazzara
adamazzara@dohenycompany.com
248-349-0904
777 Doheny Drive
Northville, MI 48167

JGM VALVE CORPORATION

Kip Koszewski
Kip@Jgmvalve.com
248-222-4364
27665 Daniel Court
Harrison Township, MI 48045

K-TECH SPECIALTY COATINGS, INC.

Denver Preston
dpreston@ktechcoatings.com
260-585-0332
PO Box 428
Ashley, IN 46705

KAPLAN LIQUID SOLUTIONS

Michael Krupka
mkrupka@kaplanliquidsolutions.com
219-477-0437
34523 N Wilson Rd.
Ingleside, IL 60041

KENNEDY INDUSTRIES

Emma Bednarczyk
ebednarczyk@kennedyind.com
248-529-2960
4925 Holtz Dr.
Wixom, MI 48393

KNAPHEIDE TRUCK EQUIPMENT

Nathaniel Tomalia
ntomalia@knapheide.com
810-908-9105
1200 S. Averill Ave. Flint MI 48503
Flint, MI 48503

KUEPER NORTH AMERICA, LLC

Ray Zeleny
mloeber@kueperblades.com
843-708-0600
171 Church St. Ste. 300
Charleston, SC 29401

LUNGHAMER FORD OF OWOSSO

Bill Campbell
bcampbell@lunghamerford.com
989-725-2888
1960 East Main Street
Owosso, MI 48867

MACQUEEN (FORMERLY BELL EQUIPMENT)

Kaylee Benson
marketing@macqueengroup.com
248-370-0000
1125 7th St. East
St. Paul, MN 55106

MICHIGAN CAT/MACALLISTER MACHINERY

Brandon McGhan
brandon.mcghan@michigancat.com
517-513-2168
7825 Northport Dr
Lansing, MI 48917

MICHIGAN CHLORIDE SALES

Karen Histed
khisted@michiganchloride.com
989-681-3221
402 W Jackson Road
St. Louis, MI 48880

MICHIGAN RURAL WATER ASSOCIATION

Tim Neumann
tneumann@mrwa.net
616-401-5436
2127 University Park Dr
Suite 340
Okemos, MI 48864

MICHIGAN STATE INDUSTRIES

Greg Gilliland
msisales@michigan.gov
517-335-3771
206 E. Michigan Ave.
Lansing, MI 48933

MIDSTATES RECREATION

Brion Kilpela
chloed@midstatesrecreation.com
765-891-1607
1279 Hazleton-Etna Rd SW
Pataskala, OH 43062

MS GREGSON

Michelle Vinson
service@msgregson.com
819-474-1910
4300, rue Vachon Drummondville
QC J2B 6V4
Canada

CHAPTER PARTNERS CONTINUED

MTECH COMPANY

Corey Padrutt
cpadrutt@mtechcompany.com
330-807-5826
7401 1st Place
Cleveland, OH 44146

NOWAK & FRAUS ENGINEERS

Allan Schneck
aschneck@nfe-engr.com
248-332-7931
46777 Woodward
Pontiac, MI 48342

OHM ADVISORS

Mikayla White
mikayla.white@
ohm-advisors.com
734-522-6711
34000 Plymouth Rd.
Livonia, MI 48150

PRECISION CONCRETE CUTTING

Mark Bonkowski
mbonkowski@pccmich.com
616-403-1140
10690 Chicago Dr
Zeeland, MI 49464

PREIN&NEWHOF

Sue Borgeson
sborgeson@preinnewhof.com
616-364-8491
3355 Evergreen Dr. NE
Grand Rapids, MI 49525

PSD CITYWIDE INC.

Jeff Muir
ttiffin@psdcitywide.com
519-690-2565
148 Fullarton Street, 9th Floor
London ON N6A 5P3
Canada

PURPLE WAVE AUCTIONS

Wes Arnold
association@purplewave.com
866-608-9283
825 Levee Dr
Manhattan, KS 66502

RANGERBID.COM

Joel Kooienga
jkooienga@1800lastbid.com
616-890-5514
601 Gordon Industrial Ct
Byron Center, MI 49315

ROAD CONDUCTOR SOFTWARE, CRA OF MICHIGAN SERVICE CORPORATION

Steven Puuri
spuuri@micountyroads.org
51-7482-1189
101 S Washington Square
County Road Association of
Michigan
Lansing, MI 48933

ROWE PROFESSIONAL SERVICES COMPANY

Dave Richmond
drichmond@rowepsc.com
810-664-9411
540 S. Saginaw Street
Suite 200
Flint, MI 49508

SAK CONSTRUCTION

Anthony Aderhold
aaderhold@sakon.com
651-263-0498
864 Holff Road
O'Fallon, MO 63366

SEWERAI

Brock Plangger
mdavis23@sewerai.com
586-764-1176
1646 N California Blvd
Suite 510
Walnut Creek, CA 94596

SHERWIN INDUSTRIES, INC.

Nate Luptowski
nluptowski@
sherwinindustries.com
989-326-0476
2129 W. Morgan Ave.
Milwaukee, WI 53221

SLC METER

James Thompson
jthompson@slcmeter.com
810-919-1794
3285 Lapeer Rd West
Auburn Hills, MI 48326

SPICER GROUP

Andy Keller
andrew.keller@spicergroup.com
231-492-2583
1624 Business Park Drive
Traverse City, MI 49686

SPRAY-PATCH ROAD REPAIR, LLC

Tanya Duncan
Joel.Duncan@Spray-Patch.com
313-682-2577
222 Bird Ave
Birmingham, MI 48009

TRI-COUNTY INTERNATIONAL TRUCKS, INC

Jeremy Kast
jkast@tricotruck.com
313-5847090
5701 Wyoming Ave
Dearborn, MI 48126

UNIQUE PAVING MATERIALS

Sonya Flanagan
scubafrog869@aol.com
231-883-3030
3993 East 93rd Street
Cleveland, OH 44105

WEST MICHIGAN INTERNATIONAL

Scott Zinsli
szinsli@wmitrucks.com
517-487-5908
1700 N Grand River Ave
Lansing, MI 48906

WIGHTMAN

Philip A. Doorlag
pdoorlag@gowightman.com
269-779-6923
433 E. Ransom St.
Kalamazoo, MI 49007

CALENDAR OF EVENTS

MPSI

April 12-17, 2026
Mt. Pleasant

MAPSI

April 19-22, 2026
St. Joseph

GLX

May 19-21, 2026
Boyer Mountain Resort

Visit our website,
michigan.apwa.net, for
details on these events
and more!

Grand Rapids

2311 E Beltline Ave SE Suite 201
Grand Rapids, MI 49546
Monday - Friday: 9am - 5pm
P: (616) 743-3020

Grand Haven

16930 Robbins Road, Suite 105
Grand Haven, MI 49417
Monday - Friday: 9am - 5pm
P: (616) 743-7070

Lansing

4063 Grand Oak Dr., Suite A109
Lansing, MI 48911
Monday - Friday: 9am - 5pm
P: (517) 887-1100

Eng.
Engineering & Surveying
www.engdot.com

MA
MICHIGAN
AVENUE

FLEIS&VANDENBRINK
DESIGN. BUILD. OPERATE.

**INNOVATIVE SOLUTIONS
FOR WHERE WE
LIVE, WORK, AND PLAY**

**CIVIL/MUNICIPAL ENGINEERING
ENVIRONMENTAL ENGINEERING
WATER/WASTEWATER ENGINEERING
TRANSPORTATION ENGINEERING**

www.fveng.com



Minimize your road maintenance.



The SELFLEVEL[®] is engineered to protect pavement around manhole structures from premature damage caused by frost heave and thaw cycle. How's your drivability?

Learn more at ejco.com/selflevel
or call 800 626 4653
Made in the USA



THANK YOU ADVERTISERS!

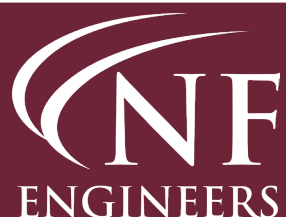
EJ	33	Michigan Chloride Sales.....	14
Eng., Inc.	33	Nowak & Fraus Engineers.....	34
Environmental Consulting & Technology.	28	OHM Advisors	20
Etna Supply Company	24	Precision Concrete Cutting.....	OBC
Fleis & VandenBrink Engineering, Inc.	33	Prein&Newhof	24
Fredrickson Supply, LLC.....	IBC	SAK Construction	IBC
Hennessey Engineers	23	Spalding DeDecker	23
Hubbell, Roth & Clark, Inc.	10	Spicer Group.....	17
Jack Doheny Company	11	Unique Paving Materials	20
MacQueen.....	5	Wade Trim	29



**CIVIL ENGINEERS
LAND SURVEYORS
LAND PLANNERS
GEOSPATIAL ENGINEERS**

**PONTIAC
DETROIT
SHELBY TOWNSHIP
KALAMAZOO**

**WWW.NFE-ENGR.COM
844-41NFENG (844-416-3364)**





SALES SERVICE RENTALS



CONTACT US TODAY!

contact@fredricksonsupply.com
(888) 949-2385
www.fredricksonsupply.com

3901 3 Mile Rd NW, Grand Rapids, MI 49534

Coming Soon! New Service Location: 6555 Sherwood St., Detroit, MI 48211

SCAN ME



Interested in Rentals? Head over to www.klosl.com for more information.



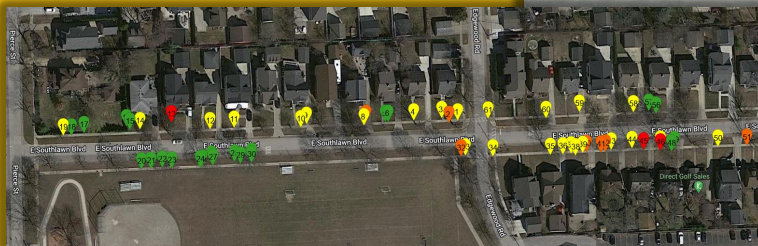


PRSRT STD
U S Postage
PAID
Lansing, MI
Permit No. 515

Great Lakes Reporter
Publication of APWA-Michigan Chapter
120 N. Washington Sq., Suite 110 A
Lansing, MI 48933
Change Service Requested

Improve your Walkability!

Cost effective repairs with detailed data to integrate into your GIS



Call: 616.403.1140
info@pccmich.com

Reduce Trip and Fall Liabilities with our professional service that helps you maintain a safe and walkable community.

